



## Manual HUAWEI Modem Programm

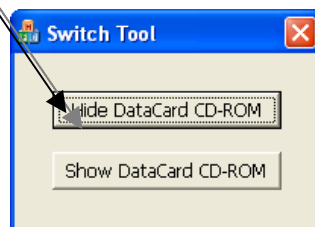
### IMPORTANT TIP:

- In order to avoid additional costs, you should switch off the roaming function in your data modem.
- Please notice that the monthly data volume has to be filled in correct. The modem will turn off automatically when the limit is reached. If not, accessorial charges in the respective mobile agreement have to be paid.

1. Connect the modem to the pc
2. The necessary drivers are installed automatically in the background
3. When you have got the message that the driver is installed, please plug off the modem and plug it in again. Wait for 2 acoustic signals!



4. Now start the programm „E220Util“
5. Select „Hide DataCard CD-Rom“

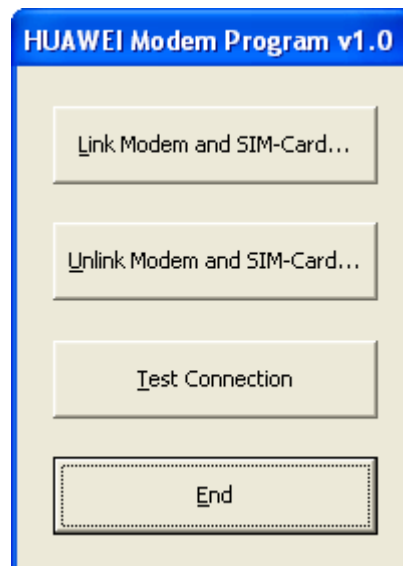


**Info:** If the program show „Can't find device“, please be sure that the driver was installed successful or the program was started to fast!





6. After you have chosen this option → then you can see „Finished“ → plug off and plug on the modem again.
7. Start the program „HUAWEI Modem Program v1.0“
8. After that, you have to approved the „license agreement“, and after this you will see the following screen



9. In order to program the modem, select „Link Modem and SIM-Card“

Link Modem and SIM-Card

Username

Password

Dial-Up Number

Modem-Init String  (if required)

PIN

Download Limit monthly (MB)

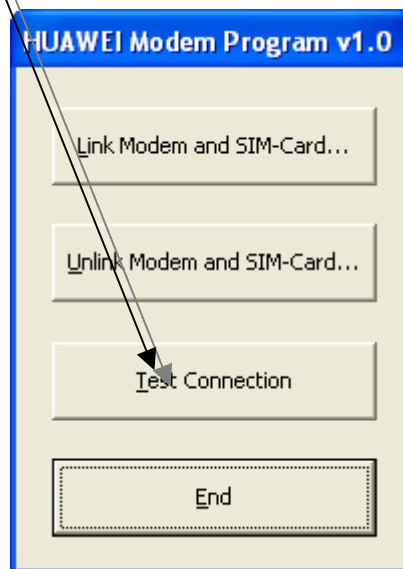
Message

Link Modem and SIM-Card Back





10. Fill in the data from the provider of your SIM-Card  
(you will get this information from your network operator or at the bottom of manual)
11. If the datas are completed, choose “Link Modem and SIM-Card” to program the modem. **(Important: The data must be correct!)**
12. In order to test the modem, select „Test Connection“



13. If the connection is successful, you can use the modem with the TAB Terminals

#### **Additional Information:**

- |                                       |  |
|---------------------------------------|--|
| 1. <u>Unlink Modem and SIM-Card</u> : | modem is reset to the standard setting (PIN: 1234) |
| 2. <u>End</u> :                       | Quit   |





## provider data

### for example:

company Orange:

Username:	web
Password:	web
Dial-Up Number:	*99#
Modem-Init String:	<i>leer</i>

company A1:

Username:	ppp@A1plus.at
Password:	ppp
Dial-Up Number:	*99***1#
Modem-Init String:	at+cgdcont=1,"IP","A1.net"

company T-Mobile:

Username:	gprs.internet
Password:	<i>leer</i>
Dial-Up Number:	<i>leer</i>
Modem-Init String:	<i>leer</i>

company Drei:

Username:	<i>leer</i>
Password:	<i>leer</i>
Dial-Up Number:	*99#
Modem-Init String:	<i>leer</i>

