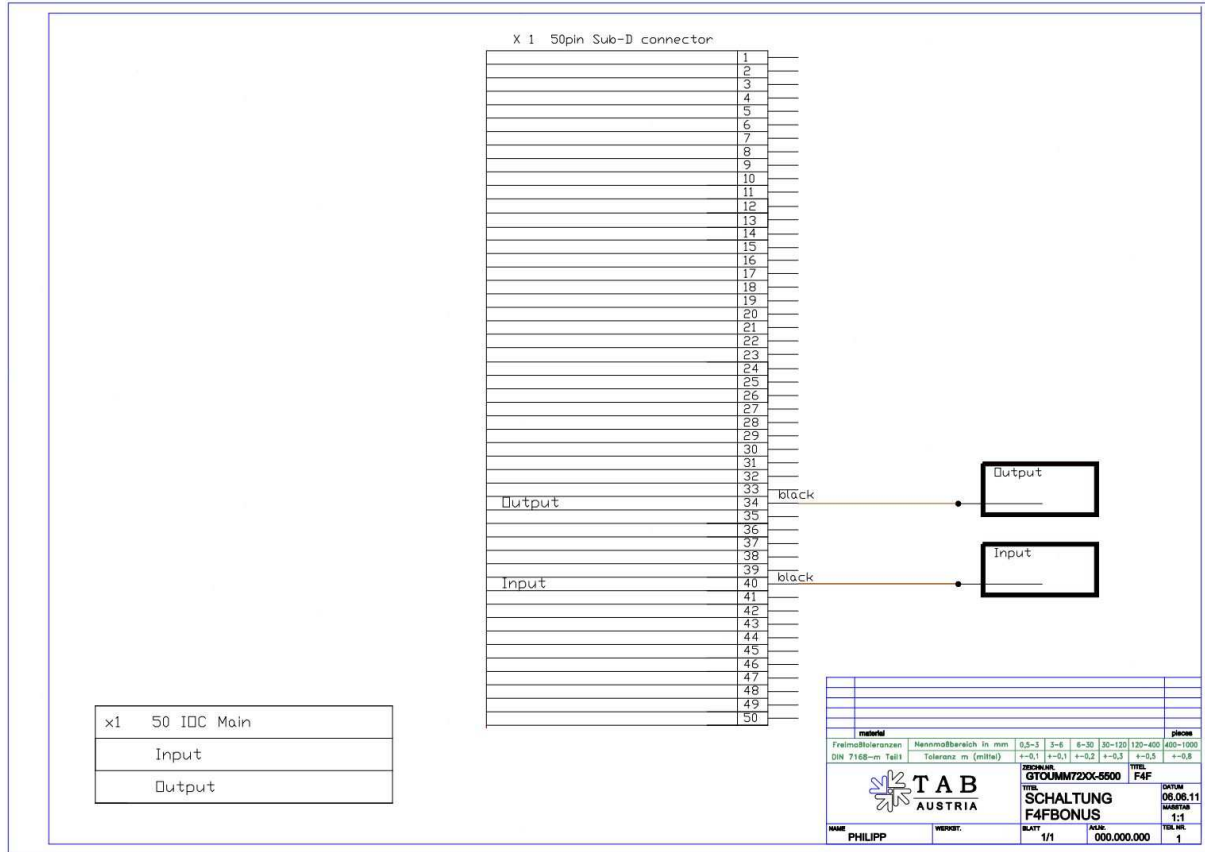




**Pin assignment:**



**Technical description:**

- minimum puls length = 30msec
- maximum puls length = 600msec
- minimum break between 2 pulses, length = 20msec

The pulsenry is to connect with gnd (pull up is integrated on the I/O Card).

Enable gate is open collector by

- High-impedance (default) = off = connected device is not allowed to send puls
- Low-impedance = on = connected device can send puls

**Attention:**

The input pulses will be shown in the bookkeeping menu on the Fun4Four as "Remote credits" but will not be shown in your online system OTM on the Internet.

