



Technical Information

for

**Silverball Beetle Pro
with external Notebox
and NV4 Notereader**



T A B

A U S T R I A

Industrie- und Unterhaltungs-
elektronik GmbH & CoKG



This document describes the settings that are possible for the Note reader NV4 to work correct when the cashbox is full.

Although we have devoted great attention to composing the texts and illustrations, it is impossible to exclude all possibility or error.

The manufacturer assumes neither legal responsibility nor any form of liability for possible erroneous information and its consequences.

We welcome suggestions for improvement, and would appreciate having any errors brought to our attention.

All rights are reserved, including those of the photomechanical reproduction and storage in electronic or other media. The program, manual and all components are subject to international copyright provisions.

(C)1996-2004 TAB-Austria
A-4052 Ansfelden, Haiderstrasse 40
Tel. +43 / 72 29 / 78 0 40 - 0*, Fax +43 / 72 29 / 78 6 60

All rights reserved (SM 14.09.2004)

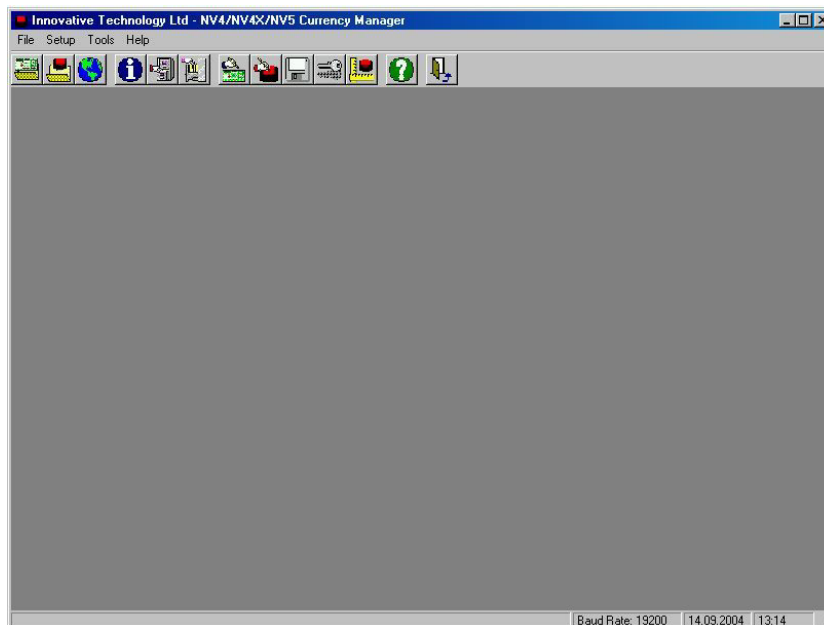




Some times when the external cashbox is full, notes come back and credits will entered.

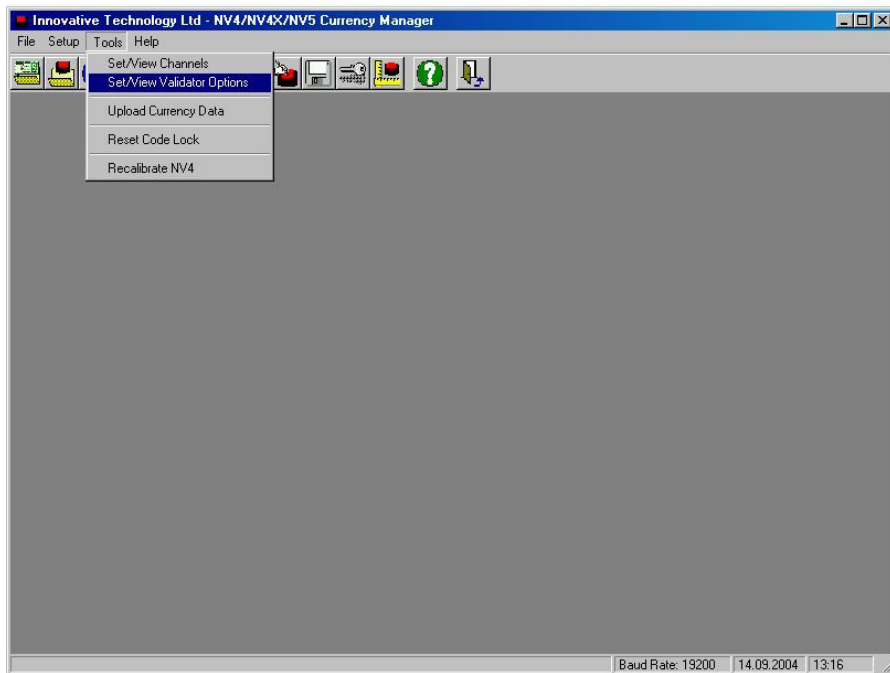
In this case, change the program settings for the NV4 Notereader.
Connect the notereader with the currency programming software from Innovative Technology.

Follow these pictures to disable the anti strim:

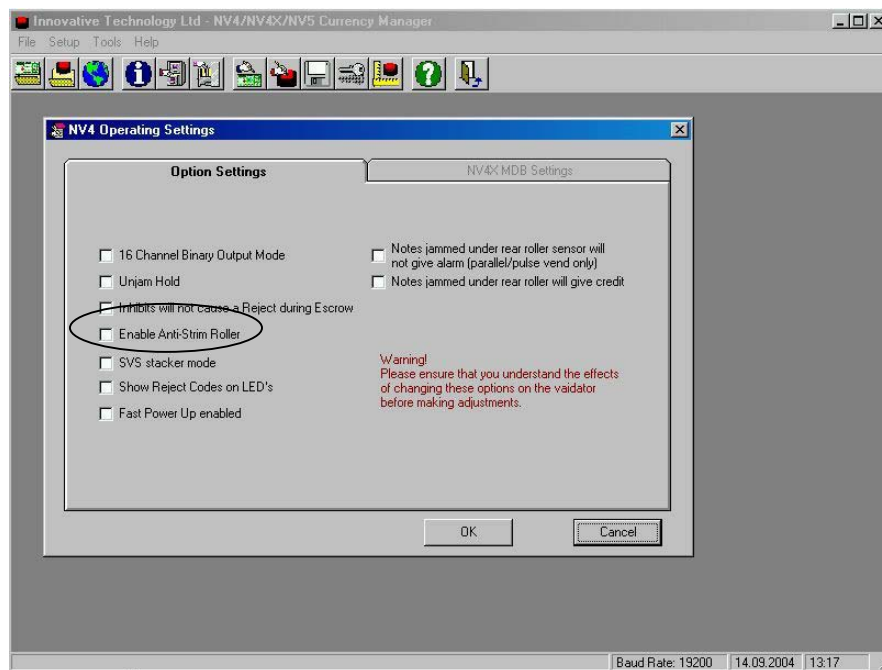


Open the NV4 currency Manager





Open the set/view validator options



Disable the point Enable Anti-Strim Roller and press o.k. button





NOTES

If there are any questions please contact our hotline.

+43/7229/78040/250

www.tab.at

